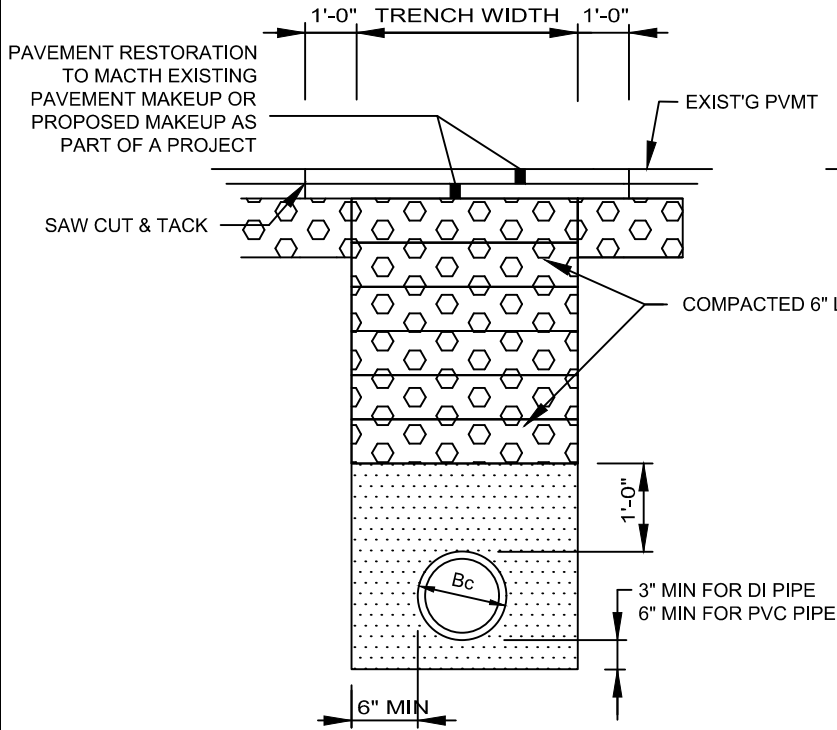
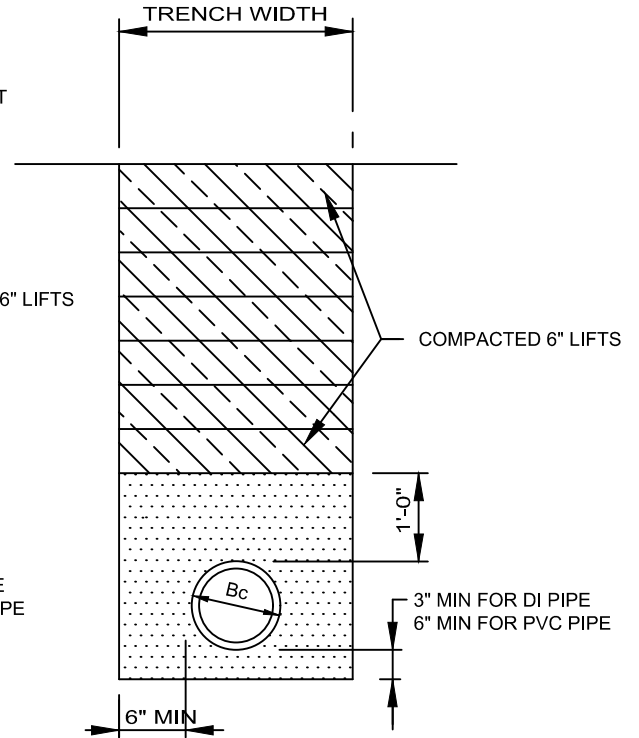


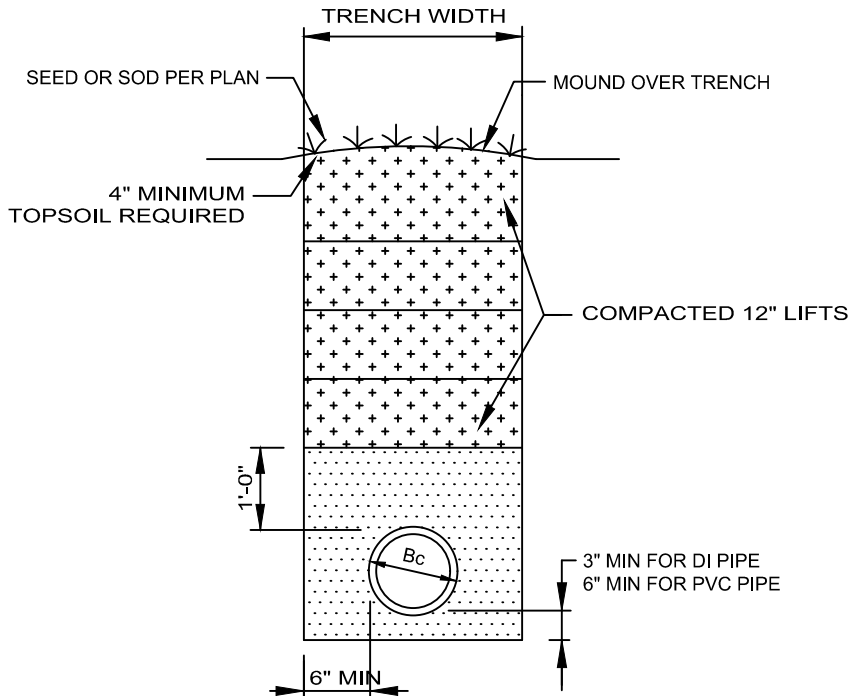
UTILITIES UNDER ROADWAY



UTILITIES IN RIGHT OF WAY BUT NOT UNDER ROADWAY



UTILITY IN GREEN SPACE



LEGEND:



SUITABLE EXCAVATED MATERIAL, AS APPROVED BY THE ENGINEER.



NO. 8 CRUSHED AGGREGATE (75% MIN), OR NO. 57 AGGREGATE.



ODOT 703.11 GRANULAR MATERIAL TYPE I (SAND NOT PERMITTED).



STREET BASE MATERIAL, ODOT ITEM 304 COMPACTED.

NOTES:

1. CONCRETE PAVEMENT SHALL BE REPLACED USING CLASS C CONCRETE, 8" MIN OR EXIST'G THICKNESS + 2", WHICHEVER IS GREATER.
2. MINIMUM TRENCH WIDTH, W (FT) = $1.25 \times B_c$ (FT) + 1(FT).



FAIRBORN
A CITY IN MOTION

ENGINEERING DIVISION
44 W. HEBBLE AVENUE FAIRBORN, OHIO 45324
PH: (937) 754-3055 FX: (937) 879-7395

TRENCH BACKFILL DETAILS

DWG NO: **MS-1.0**

NOTE 1: DRAWING VALID ONLY WHEN USED AS SHOWN AND IN CONJUNCTION WITH OTHER FAIRBORN ENGINEERING SPECIFICATIONS AND/OR DETAILS. THIS DRAWING REPRESENTS MINIMUM STANDARDS. ANY MODIFICATIONS TO THIS DETAIL SHALL FIRST BE SUBMITTED TO THE CITY ENGINEER FOR APPROVAL.

NOTE 2: CALL THE FOLLOWING AGENCIES AT LEAST 48 HOURS IN ADVANCE OF ANY EXCAVATION:
O.U.P.S. AT 8-1-1 AND O.A.G.P.U.P.S. AT (800) 925-0988

ISSUE DATE: **02/22/2017**

ENG'R: **MAJ**

APPROVED: **DPO**

SCALE: **NONE**

FILE:

REV NO.	REV DATE	REV DESCRIPTION	REV NO.	REV DATE	REV DESCRIPTION