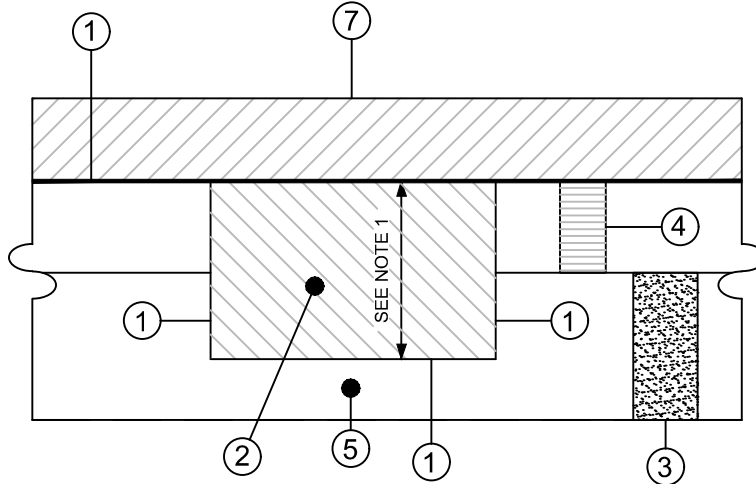


FULL DEPTH ASPHALT REPAIR - OVERLAY

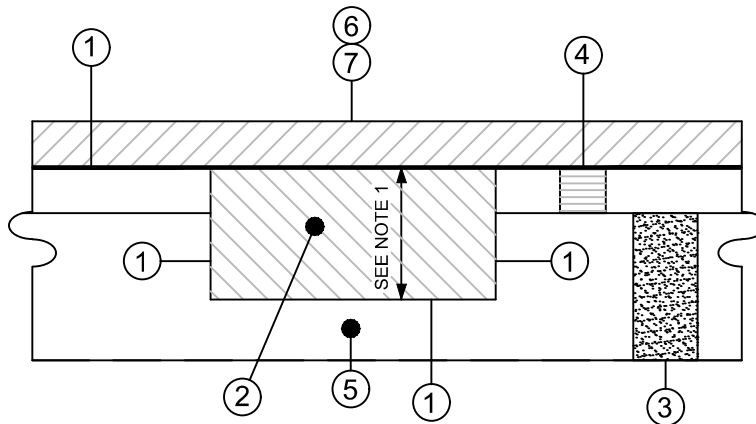


LEGEND:

1. TACKCOAT USING HOT ASPHALT CEMENT AT 0.10 GAL/SY
2. ITEM 301 (3" MAX COMPACTED LIFTS) (NEATLY SAW CUT PAVEMENT REPAIR AREA)
3. EXISTING BASE
4. EXISTING ASPHALT PAVEMENT
5. COMPACT SUBBASE AFTER EXCAVATION
6. PAVEMENT MILLING PER SPECIFICATIONS
7. ITEM 448 ASPHALT WEARING SURFACE PER SPECIFICATIONS

NOTE 1: ACTUAL AREA AND DEPTH AS DIRECTED BY THE ENGINEER. MINIMUM DEPTH SHALL BE 4".

FULL DEPTH ASPHALT REPAIR - MILL AND ASPHALT FILL



**ENGINEERING DIVISION**  
44 W. HEBBLE AVENUE FAIRBORN, OHIO 45324  
PH: (937) 754-3055 FX: (937) 879-7395

**PAVEMENT REPAIR - FULL DEPTH**

**NOTE 1:** DRAWING VALID ONLY WHEN USED AS SHOWN AND IN CONJUNCTION WITH OTHER FAIRBORN ENGINEERING SPECIFICATIONS AND/OR DETAILS. THIS DRAWING REPRESENTS MINIMUM STANDARDS. ANY MODIFICATIONS TO THIS DETAIL SHALL FIRST BE SUBMITTED TO THE CITY ENGINEER FOR APPROVAL.  
**NOTE 2:** CALL THE FOLLOWING AGENCIES AT LEAST 48 HOURS IN ADVANCE OF ANY EXCAVATION:  
**O.U.P.S. AT 8-1-1 AND O.A.G.P.U.P.S. AT (800) 925-0988**

REV NO.	REV DATE	REV DESCRIPTION	REV NO.	REV DATE	REV DESCRIPTION

DWG NO: **PV-6.1**

ISSUE DATE: **03/14/2017**

ENGR: **MAJ**

APPROVED: **DPO**

SCALE: **NONE**

FILE: