

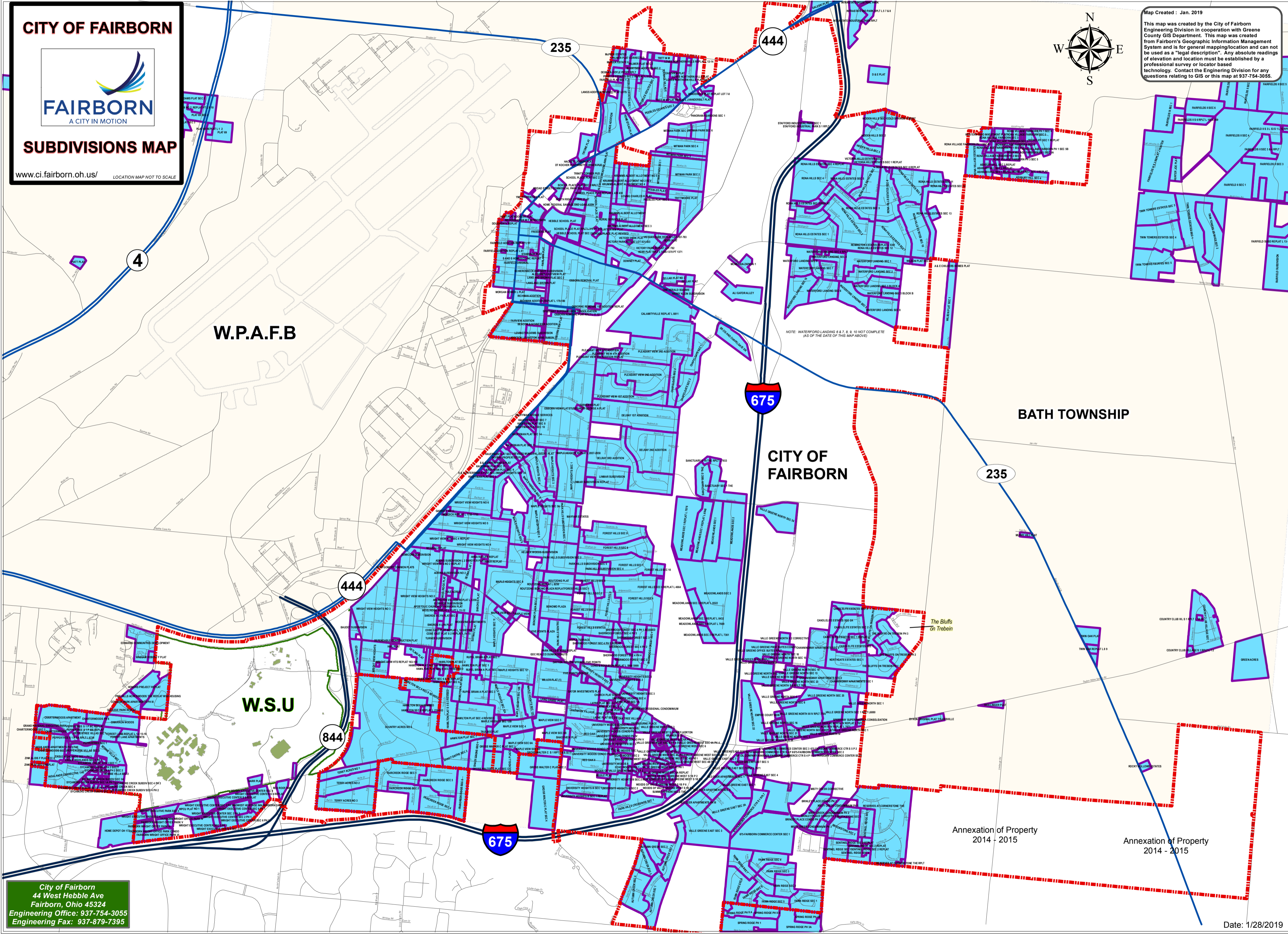
CITY OF FAIRBORN



SUBDIVISIONS MAP

www.ci.fairborn.oh.us/ LOCATION MAP NOT TO SCALE

Map Created : Jan. 2019
This map was created by the City of Fairborn Engineering Division in cooperation with Greene County GIS Department. This map was created from Fairborn's Geographic Information Management System and is for general mapping/location and can not be used as a "legal description". Any absolute readings of elevation and location must be established by a professional survey or locator based technology. Contact the Engineering Division for any questions relating to GIS or this map at 937-754-3055.



W.P.A.F.B

W.S.U

BATH TOWNSHIP

CITY OF FAIRBORN

Annexation of Property 2014 - 2015

Annexation of Property 2014 - 2015

City of Fairborn
44 West Hebble Ave
Fairborn, Ohio 45324
Engineering Office: 937-754-3055
Engineering Fax: 937-879-7395

Date: 1/28/2019