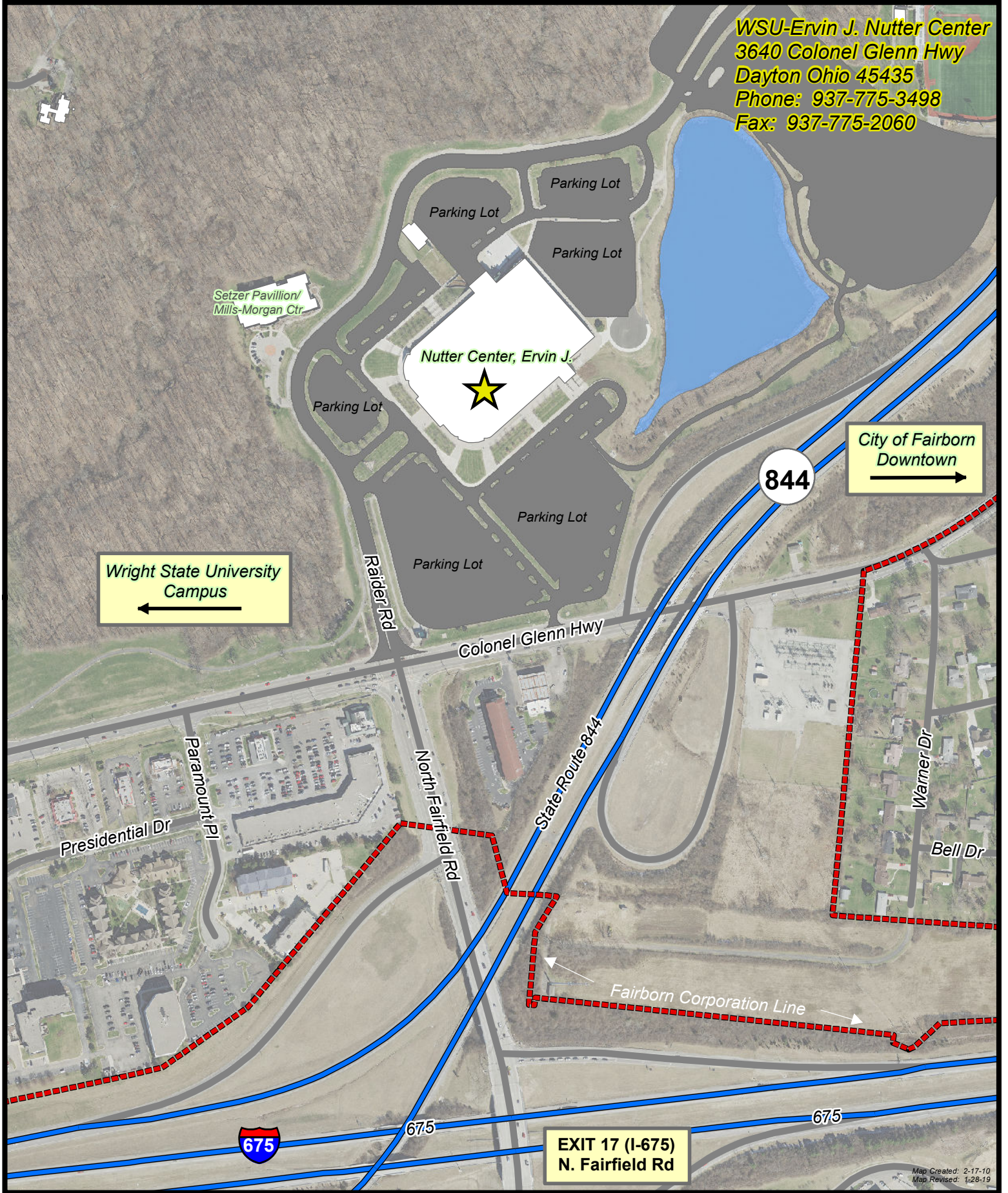


**WSU-Ervin J. Nutter Center**  
 3640 Colonel Glenn Hwy  
 Dayton Ohio 45435  
 Phone: 937-775-3498  
 Fax: 937-775-2060



Map Created: 2-17-10  
 Map Revised: 1-28-19



City of Fairborn  
 44 W. Hebble Ave  
 Fairborn, OH 45324  
 Phone: (937) 754-3055  
 Fax: (937) 879-7395

DRAWN BY: JN  
 SCALE: 1" = 260'  
 DATE: JAN. 2019

**WRIGHT STATE UNIVERSITY**  
**ERVIN J. NUTTER CENTER**  
 City of Fairborn

**LOCATION MAP**  
 CALL 48 HRS PRIOR TO ANY  
 EXCAVATING:  
 O.U.P.S. AT 811 AND/OR  
 O.G.E.U.S. AT (800) 925-0988  
 SHEET 1 OF 1

THIS MAP WAS CREATED  
 BY THE CITY OF FAIRBORN  
 ENGINEERING DIVISION  
 IN COOPERATION WITH  
 GREENE COUNTY, OHIO  
 BASE MAP DATA. THIS IS  
 A LOCATION MAP ONLY  
 AND IS FOR GENERAL  
 MAPPING PURPOSES.  
 INFORMATION SHOWN  
 IS NOT WARRANTED  
 FOR ACCURACY.

