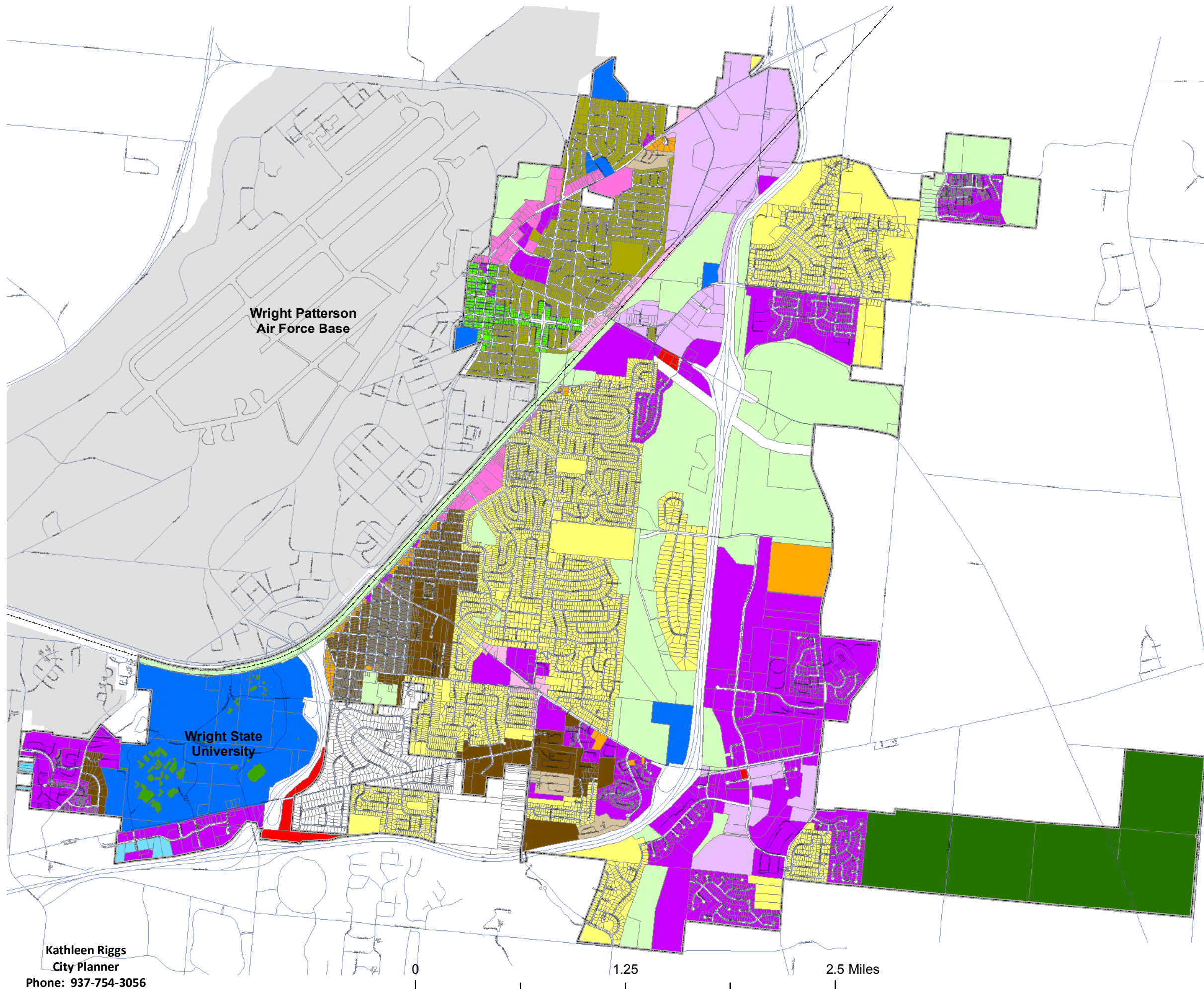


**Zoning Districts**

-  Suburban Residential
-  Urban Edge Residential
-  Medium Density Residential
-  Conservation Development
-  Planned Development
-  Neighborhood Center
-  Neighborhood Commercial
-  Downtown Commercial
-  Community Commercial
-  General Commercial
-  Civic & Institutional
-  Professional Office
-  Light Industrial
-  Agricultural & Mineral
-  Manufactured Home Park
-  Bath Township
-  City of Fairborn Boundary



**Fairborn Zoning Map**

City of Fairborn  
Greene County, Ohio

ORD. # 34-17



Effective Date: 10/18/18

Kathleen Riggs  
City Planner  
Phone: 937-754-3056

0 1.25 2.5 Miles

SCALE: 1" = 3,000'