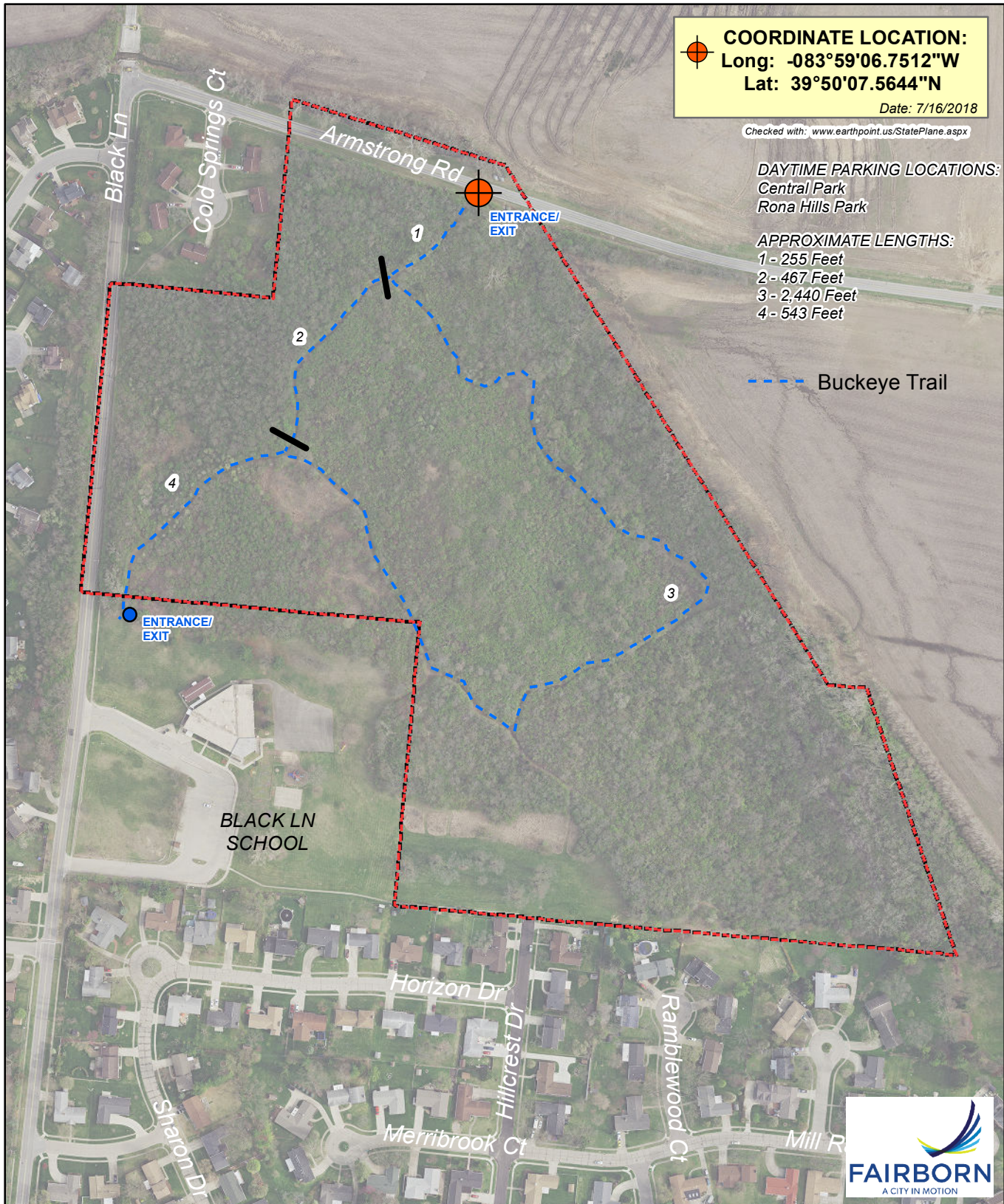


**PARK FACILITIES:**

Buckeye Trail (with Blue Blazes) (~.702 Miles)  
 Cross Country Skiing Trails

Open Daylight to Dusk (for more information contact Fairborn Parks & Recreation 937.754.3090).  
 No overnight camping.

**COLD SPRINGS RESERVE, 760 BLACK LN**



**COORDINATE LOCATION:**  
 Long: -083°59'06.7512"W  
 Lat: 39°50'07.5644"N  
 Date: 7/16/2018

Checked with: [www.earthpoint.us/StatePlane.aspx](http://www.earthpoint.us/StatePlane.aspx)

**DAYTIME PARKING LOCATIONS:**  
 Central Park  
 Rona Hills Park

**APPROXIMATE LENGTHS:**  
 1 - 255 Feet  
 2 - 467 Feet  
 3 - 2,440 Feet  
 4 - 543 Feet

--- Buckeye Trail

